

A GUIDE TO

FINN

A NEW MUSICAL

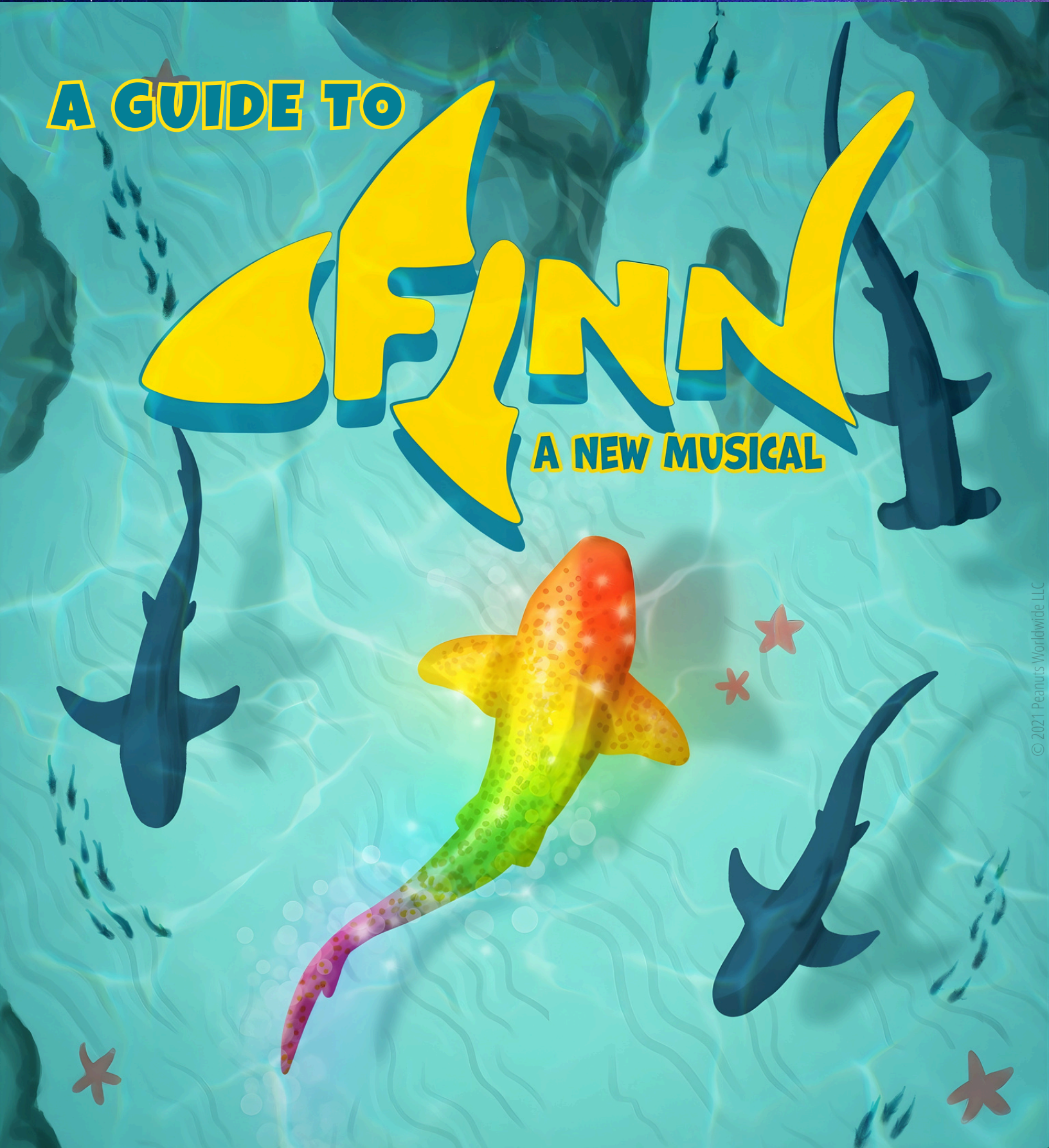


TABLE OF CONTENTS

About the Show

Show Synopsis 3 - 5

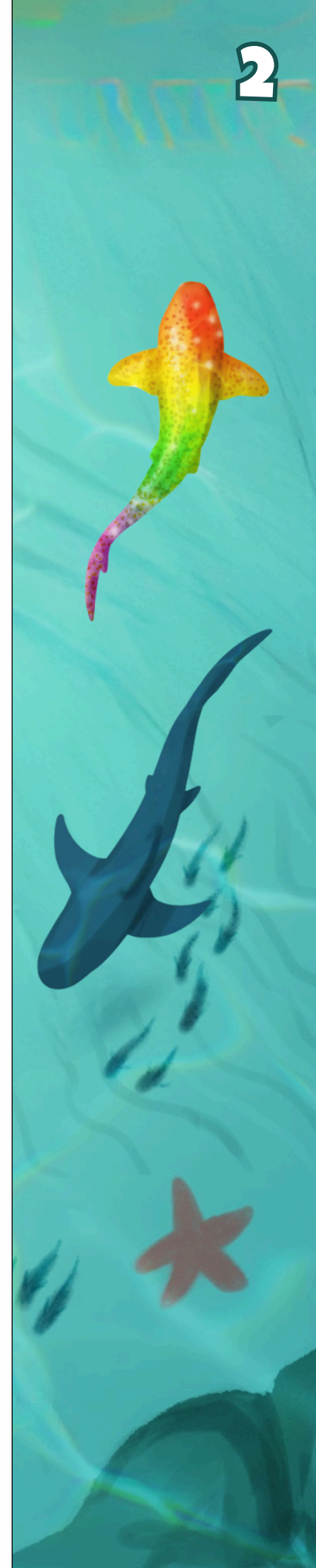
Finding *Finn* 6

Know Your Ocean 7 - 8

Seeing the Play: Being a Good Audience Member 9

Discussion Questions 10 - 11

Activities 12 - 14



ABOUT THE SHOW

Show Synopsis

The show opens on Finn, a young shark getting ready for his first day of Shark Guard training. His older sister and leader of the Shark Guard, Aggie, gives him some encouraging advice, and Finn meets his new fellow members of the Shark Guard ("**Today's the Day**").

As Finn begins his training, he sees the regal tang fish Seasil and her Auntie arriving for the Jetstream Jubilee, a week-long celebration of singing, dancing, and "generally frivolous fishiness." Finn secretly wants to go, but keeps his excitement a secret. Shark Guard training continues, and Finn shows off his uniform jacket he secretly bedazzled to the other sharks. Aggie pulls Finn aside, gives him a new uniform jacket, and tells Finn the joys of being a "real" shark ("**Sharks Rule!**").

Aggie tells Finn that while the Shark Guard will be patrolling the borders of the Jubilee, they will not be attending it. Seasil and her Auntie return, and Finn overhears Seasil proposing that the regal tang fish do a new dance at the Jubilee this year. Finn interrupts, saying that he wants to see Seasil's dance, but Aggie and Auntie disapprove. Seasil and her Auntie swim away.

Aggie leaves, and Finn puts on a costume to disguise himself as a fish so he can go to the Jubilee. He runs into Seasil, frustrated that she can't fully express herself with her new dance. To keep his identity secret, Finn says that he is a "bright rainbow sparkle fish" named Finnsterina. Seasil shows Finn (as Finnsterina) around the Jubilee ("**At the Jubilee**").



ABOUT THE SHOW

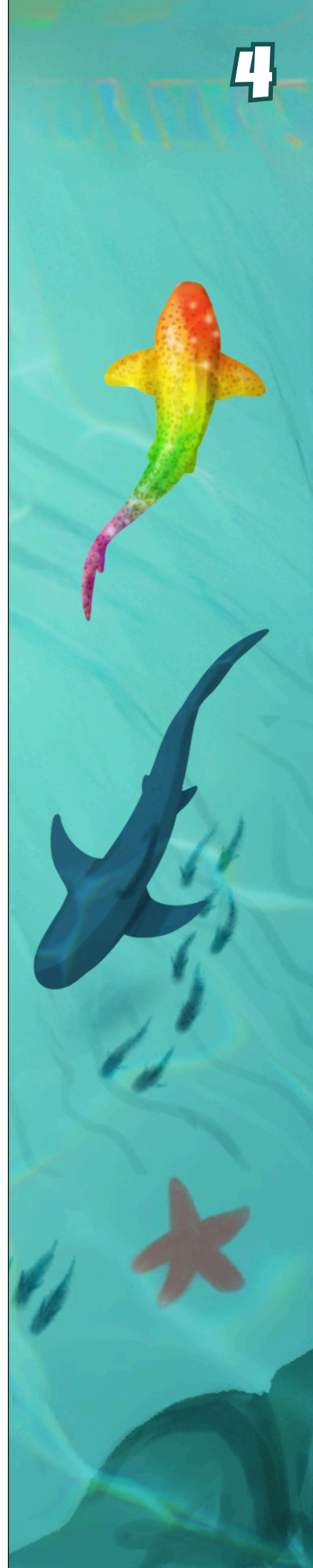
4

Show Synopsis (cont.)

Seasil leaves, and Finn feels like belongs at the Jubilee, and feels comfortable to begin removing his fish costume ("**Sparkle & Shine**"). Seasil returns, does not recognize Finn, and think he's a shark that ate Finnsterina. Finn reassures her that he actually was Finnsterina, and he just wanted to see the Jubilee. Seasil shares that she knows what it's like to "have something inside you that doesn't match what everyone sees," and sings about it ("**Can't Keep It In**").

Aggie finds Finn at the Jubilee, and Finn pretends to scare Seasil away. Finn realizes that as long as he does well in the Shark Guard, Aggie won't watch him as closely, and he can still be shark while dancing with the fish. The next day, Seasil tells Finn that she plans on practicing her dance with her friends at The Trench of No Return, but they don't like sharks. Finn assures her that he can be both "Shark Guard Finn" around Aggie and "bright rainbow sparkle fish Finnsterina" around Seasil's friends. Finn bounces back and forth between Shark Guard training and dance rehearsal.

One day during dance practice Finn's wig falls off, revealing to Seasil's friends that he's actually a shark. They are scared and freak out, leading Finn to leave. Seasil apologizes to Finn, and says that if her friends can't accept him, she doesn't want to be friends with them anymore. Seasil and Finn practice their dance, until they are interrupted by the sound of baby fish who were stung by a jellyfish. Aggie finds them, and relieves Finn of his Shark Guard duties since he "acting fishy" and was too distracted. Finn begs for one more chance, Aggie gives him one, and he smashes a headdress Seasil made for him.



ABOUT THE SHOW

Show Synopsis (cont.)

Back at the Shark Guard, Aggie tells the sharks that a fish has gone missing: Seasil. Finn goes to the Trench of No Return, and finds Seasil stuck in some rocks. She tells Finn to leave, but he refuses to leave his best friend ("**Til I Met You**"). Seasil breaks free and takes Finn to the Jubilee.

As Finn is about to step on stage to dance with Seasil, a swarm of jellyfish break into the Jubilee. The Shark Guard are struggling to control the jellyfish, until Finn distracts them with a sparkly cape. He leads the jellyfish away from the Jubilee and into the Trench of No Return. Aggie, Seasil, and the rest of the Jubilee are nervous when they lose sight of him, but Finn quietly returns in only his underwear, having thrown his outfit into the trench. Finn takes the Jubilee stage, and Seasil helps him transform into the truest version of himself, a colorful and fabulous "fishy shark" ("**Time to Be Me**").

Aggie tells Finn that she is proud of him for being brave enough to be himself, and Finn's actions inspire others at the Jubilee to switch things up. Seasil's Auntie lets her do her new dance, other members of the Shark Guard open up, and the rest of the Jubilee celebrate their true selves ("**All You Gotta Be Is You**").

FUN FISH FACT

There are **over 20,000** species of fish in the world!

ABOUT THE SHOW

6

Finding *Finn*

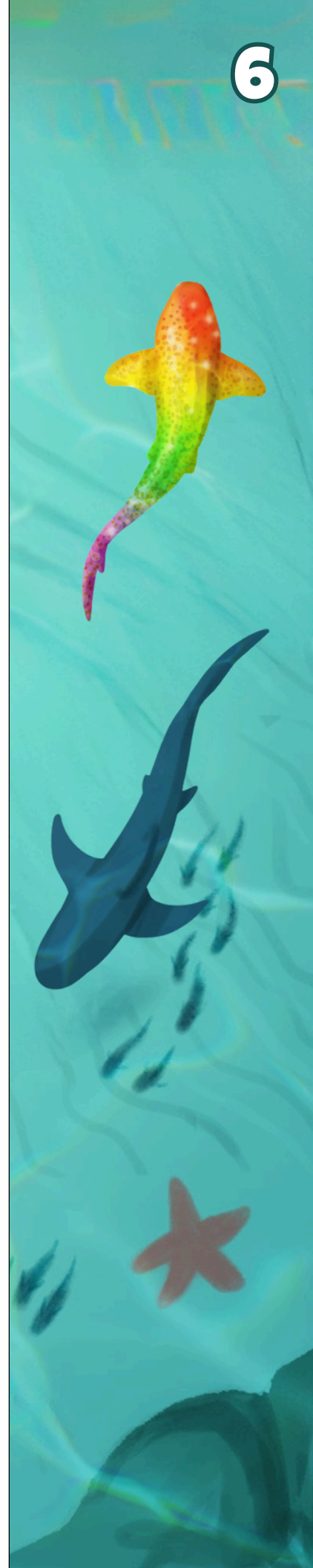
Every play or musical was new at the beginning. Whether it is an original idea or an exciting presentation of a familiar fable, a new work of theatre is a unique piece of art that you have to be in person to fully experience.

Finn has music written by Michael Kooman, and script and lyrics written by Chris Nee and Christopher Dimond. These writers collaborated to create an original story and characters, decide who should sing and when, and share their work with actors to bring their work to life.

It takes a lot of time to get a musical just right. The writers create multiple drafts that reflect new ideas and changes they want to incorporate. Once they land on a version they are confident in, the writers present it to an audience of producers and other people who might be interested in the musical's future.

Finn had its first workshop in June 2024. Writers Kooman, Nee, and Dimond and a cast of actors dedicated time to reading the script, singing the songs, and figuring out what changed needed to be made before its premiere. The first fully-staged production of *Finn* took place in Washington D.C. in November 2024, with sets, lights, costumes, and a public audience.

Constellation Stage + Screen is the first theater to produce *Finn* since its original production. YOU are now a part of the show's history, and get to say you "were there when..."



KNOW YOUR OCEAN

Finn's characters include and mention a sea of fish and other underwater creatures! Before seeing the show, get to know your ocean:



BARRACUDA

Barracudas are long, fast ocean fish with powerful jaws and sharp teeth that help them catch smaller fish. Some barracudas can reach speeds of 35 miles per hour!

BARNACLES

Barnacles are small sea animals that attach themselves to hard surfaces like rocks, ships, and even whales. They stay in one place for their entire lives once they attach!



CATFISH

Catfish are fish known for the whiskers around their mouths, which help them sense food in muddy water. Some catfish have thousands of taste buds all over their bodies!

PIRANHA

Piranhas are freshwater fish from South America that have strong jaws and razor-sharp teeth. They can eat fish, insects, and even fruit that falls into the water!



PUFFERFISH

Pufferfish can inflate their bodies like a balloon when threatened, making them harder for predators to swallow. A pufferfish can inflate more than twice its normal size!

SEAHORSE

Seahorses are small fish that swim upright and use their tails to hold onto seagrass and coral. Male seahorses carry the eggs in a pouch until they are ready to hatch!



SHARK

Sharks are powerful ocean predators rows of sharp teeth designed for catching and tearing prey. Sharks can grow and replace thousands of teeth during their lifetime!



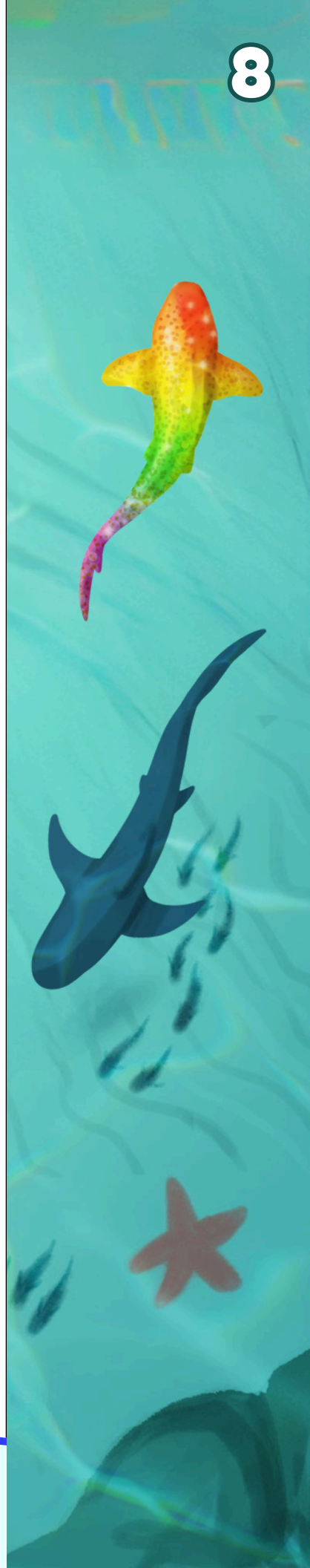
SQUID

Squids are ocean animals with eight arms and can release a cloud of dark ink to confuse predators and escape. Some squids can quickly change color to communicate!



TANG FISH

Tang fish are brightly colored reef fish that graze on algae growing on coral and rocks. Many species live in tropical coral reefs around the world. Dory from *Finding Nemo* is a blue tang!



FUN FISH FACT

A group of fish is called a **school!**

SEEING THE PLAY

Being a Good Audience Member

Experiencing theater is a group activity shared not only with the actors, but also with the people sitting around you. Your attention and participation help the actors perform better, and allows the rest of the audience to enjoy the show. We invite you to laugh when it is funny, cry when it is sad, gasp when it is shocking, but refrain from talking during the show, as it disturbs audience members and performers alike.

Here are some helpful guidelines on how to enjoy the performance:

- Leave cell phones, tablets, hand held games, and other distracting and noise-making electronic devices at home or turn them completely off.
- Do not text during the performance. The light and the motion is very distracting to those around you, on stage, and the tech crew behind you.
- Gum and food must stay in the lobby. Drinks are only allowed if they have a lid.
- The lights dimming and going out signal the audience to quiet down and settle in your seats: the play is about to begin.
- Don't talk with your neighbors during the play. It distracts people around you and the actors on stage.
- Focus all your attention on the play to best enjoy the experience. Listen closely to the dialogue and sound effects, and look at the scenery, lights, and costumes. These elements all help to tell the story.
- Get involved in the story. Laugh, cry, sigh, gasp – whatever the performance draws from you. The more emotionally involved you are, the more you will enjoy the play.
- Remain in your seat during the play. Please use the restroom before or after the show, as well as during intermission.
- During the curtain call, remain in your seat and applaud because this is part of the performance too. The actors will come out on stage one more time to say thank you for your participation as an audience member.



DISCUSSION QUESTIONS

10

Before the Play:

The story of *Finn* is set in a sea filled with countless fish and sea creatures. Along with the actors, a team of directors and designers work together to bring this underwater universe to life on stage. This includes a director, music director, choreographer, costume designer, set designer, lighting designer, and sound designer. What artistic choices might be made by the directors and designers to help portray sea creatures and their environment? Why is it important for the people in these positions to work together as a unified team?

Anchor Standards 1-2; 7-8: Envision/Conceptualize, Develop, Reflect, Interpret

Indiana Academic Standards: TH:Cr1.1.3(b), 4(a), 5-6(b); TH:Cr2.1.1(a), 1(b), 111(a); TH:Re7.1.2(a), 4(a); H:Re7.1.1-II(a); TH:Re8.1.5(c)

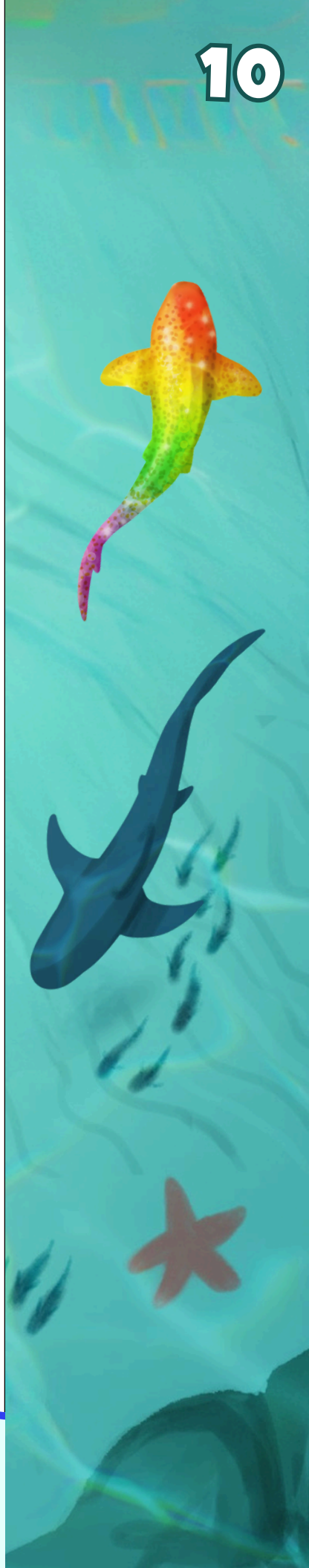
The character of Finn struggles with acceptance and often feels misunderstood. How might an actor playing Finn express these emotions in performance? How do those feelings show up in real life?

Anchor Standards I; 4; 7-8; 10-11: Envision/Conceptualize, Select, Reflect, Interpret, Empathize, Interrelate

Indiana Academic Standards: TH:Cr1.1.1(a), 1(c), 3-4(c), 5(a), 5(c); TH:Pr4.1.5(a); TH:Re7.1.11-111; TH:Re8.1.3(a), 3(b), 5(c), 6(a), 7(a); TH:Cn10.1.1-3(a), 6(a); TH:11.1.6(a)

FUN FISH FACT

The biggest fish in the world is the **giant whale shark**, growing up to **two school buses long!**



DISCUSSION QUESTIONS

After the Play:

Recall the performance of each character in *Finn*. What performance stood out the most? Why? Before the show, you were introduced to a variety of fish and sea creatures mentioned in the musical. After seeing the show, how accurately do you feel the actor portrayed their character's fish/sea creature? What about their performance helped convey this?

Anchor Standards 1; 8; 10: Envision/Conceptualize, Interpret, Empathize

Indiana Academic Standards: TH:Cr.1.1-3(c), 4-5(a), 5-8(c), I-III(c); TH:Re8.1.1-2(a), 3-5(c), 5(b), 6(a), 6-8(c), 8(a), I(a), I(c), III(a); TH:Cn10.1.1-5(a), I-II(a)

Finn explores the topics and themes of family, friendship, self-expression, acceptance, and being your truest self. What lesson(s) did you take away from the show? What morals might this show teach? Did these lessons or morals change your perspective on any of the topics and themes mentioned in the show?

Anchor Standards 1; 4; 7; 10: Envision/Conceptualize, Select, Reflect, Empathize

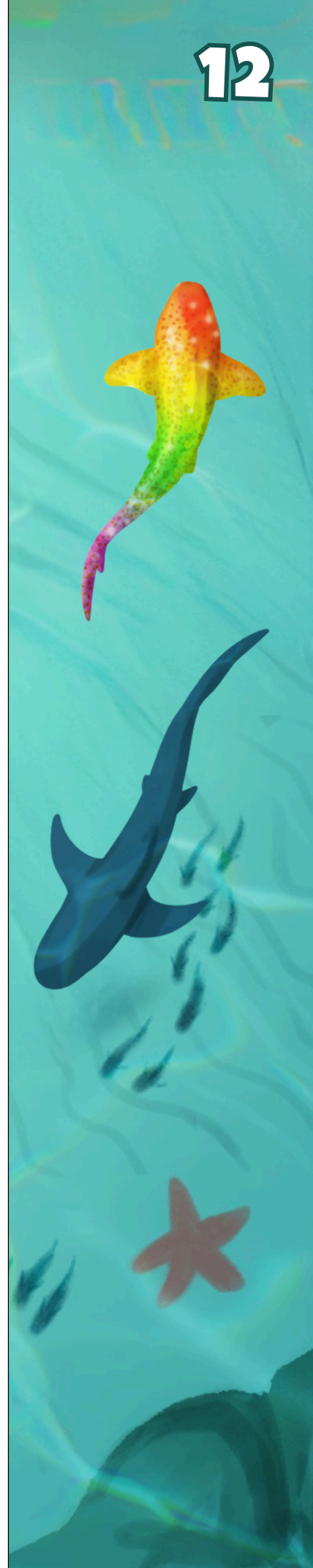
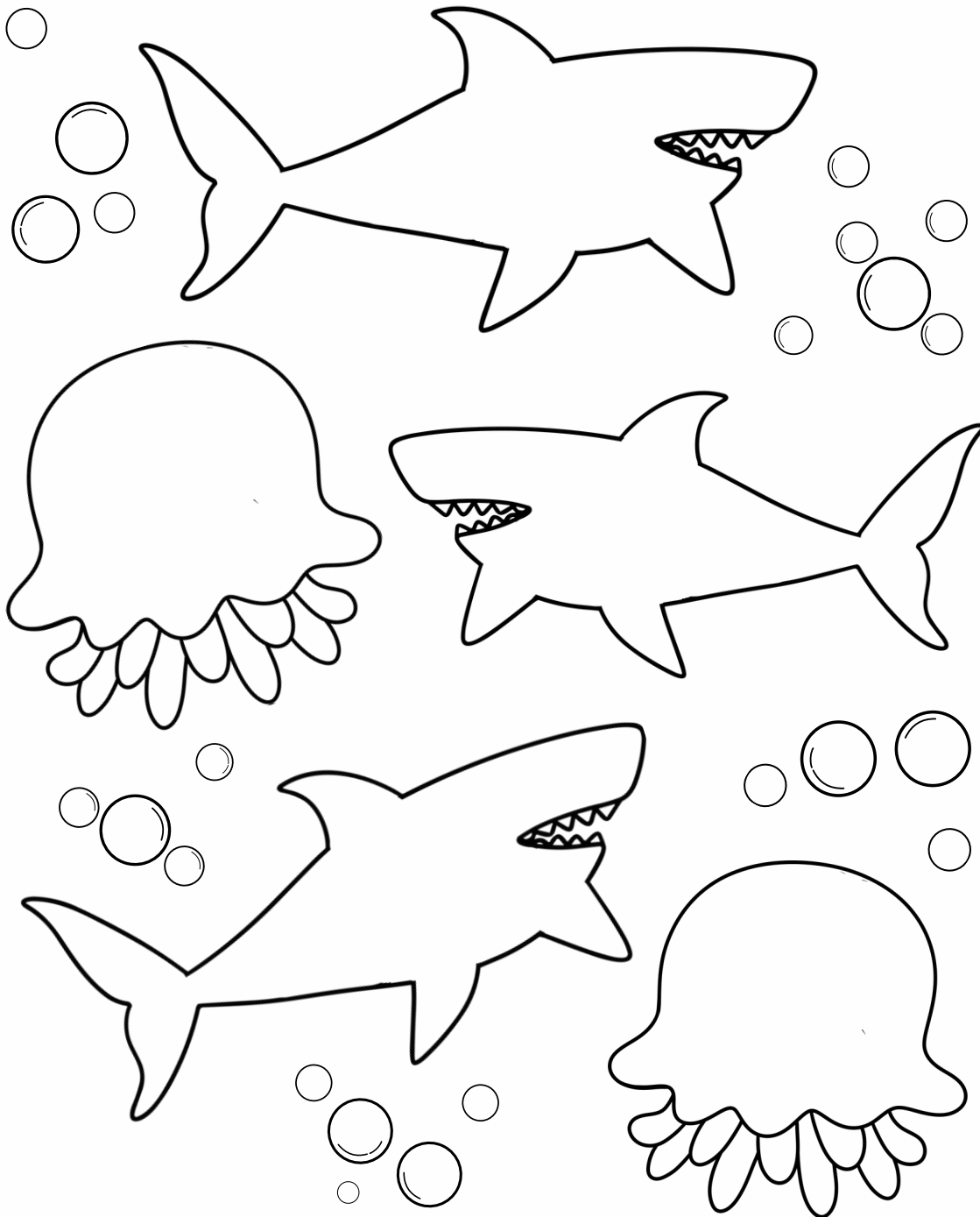
Indiana Academic Standards: TH:Cr1.1.II(a), II-III(c); TH:Pr4.1.1-2(a), 5-7(a), 8(b), I-II(a); TH:Re7.1.1-6(a), II-III(a); Th:Cn10.1.1-3(a), 6-7(a), II(a)

FUN FISH FACT

It is estimated that there are **3.5 trillion** fish in the ocean!

All the Fish in the Sea...

In *Finn*, the Shark Guard is charged with the task of protecting fish from the jellyfish. Take a moment to reflect, and write any obstacles you feel you may be facing in the jellyfish. Then, identify and write any personal strengths you have and/or the names of supportive people in your life in the sharks.



ACTIVITIES

All You Gotta Be Is YOUuniform

Finn's bedazzled uniform jacket, while originally disapproved of by his sister and the other members of the Shark Guard, ends up being the thing that helps Finn save the Jetstream Jubilee.

Color in the uniform jacket below and make it your own! Don't forget to include your favorite colors, patterns, and personal pizzazz.



Jetstream Jubilee Word Search

Finn encounters a lot of new fish and terminology at the Jetstream Jubilee, requiring his friend Seasil to help him find his way. Find the words in the Word Bank in this sea of letters.

S	S	X	C	B	E	E	T	G	M	O	J	U	E	W
P	C	H	A	I	O	G	N	D	A	I	D	N	A	C
A	A	Z	E	O	K	S	T	I	M	S	X	D	N	R
R	T	E	G	L	S	T	H	Z	A	Q	K	E	G	U
K	F	E	Y	U	L	C	Z	A	B	B	S	R	L	S
L	I	S	T	M	Y	E	N	R	R	S	P	W	E	T
E	S	U	B	I	G	U	O	W	L	K	D	A	R	A
P	H	P	G	N	F	V	A	K	Z	N	J	T	F	C
I	C	E	L	E	B	R	A	T	I	O	N	E	I	E
R	I	R	R	S	P	W	J	V	E	L	Y	R	S	A
A	V	S	R	C	N	B	N	Z	V	I	D	F	H	N
N	B	T	Q	E	Z	B	A	R	R	A	C	U	D	A
H	V	A	Q	N	C	K	W	J	I	P	T	A	R	R
A	P	R	S	C	K	V	J	U	B	I	L	E	E	M
B	R	F	C	E	H	I	Z	Q	U	W	H	L	X	N

WORD BANK

ANGLERFISH	BARRACUDA	BIOLUMINESCENCE	CATFISH	
CELEBRATION	CRUSTACEAN	JUBILEE	PIRANHA	
SHARK	SHELL	SPARKLE	SUPERSTAR	UNDERWATER

