

CONSTELLATION
STAGE + SCREEN

PRESENTS

the **MOON** *and the* **SEA**

A NEW MUSICAL

Book by DOUGLAS LYONS

Music & Lyrics by GREIGHTON IRONS

Directed by JOSH RHODES



JUNE 8 – 25, 2023

WALDRON AUDITORIUM

SEASON SPONSOR



MAINSTAGE SEASON SPONSOR

One World at

Woolery
MILL

EDUCATION INITIATIVE
NAMING SPONSOR

IU Credit Union

SEASON MEDIA SPONSOR

The Herald Times

SEASON RADIO SPONSOR



SEASON HOSPITALITY SPONSOR



SHOW SPONSORS



German American Bank
Banking | Insurance | Investments



OLIVER
WINERY

ENDEAVOR
HOSPITALITY GROUP

UNDERWRITTEN BY

ED & JAN RYSER



Mechanical & Building Solutions

"HFI is a proud supporter of Constellation Stage & Screen.
We are excited for the upcoming season and wish
everyone at Constellation the best of luck!"

-Steve Dawson
President & CEO | Harrell-Fish Inc.

We are making a difference for the children of Riley Hospital and we invite you to join us.
We will match your donation so your gift doubles!

Make a difference with HFI for Riley



**Riley
Children's
Foundation**



WELCOME...

Welcome!

On behalf of German American Bank, I am pleased and honored to welcome you to the Constellation Stage & Screen world premiere production of *The Moon and the Sea*.

German American Bank has always been a proud sponsor of numerous arts organizations in and around Bloomington and the surrounding counties. Our Mission Statement is "to help individuals, families, and businesses achieve their financial dreams to improve their quality of life and place. We support the communities we serve and believe that when a community thrives, its people prosper".

Fast forward from our formation as an Indiana-based bank in 1910, German American has retained its independent growth strategy. We choose to enter into markets that we are familiar with in order to solidify our position as a community bank. At German American, we are committed to retaining local leadership to more effectively and efficiently meet our diverse communities' needs and objectives.

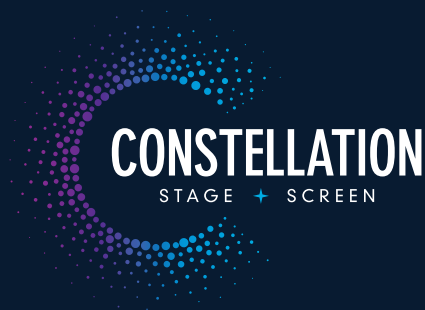
German American employees are your family, your neighbors, your friends, your organization's volunteers and Board members, but most importantly; we are your trusted banking, investment, wealth management, and insurance advisors. We look forward to spending this evening with you and the talented team behind this magical production of *The Moon and the Sea*.

Sincerely,



Ilene Schaeffer

*Regional Vice President, Private Banker
German American Bank*



**STAY UP TO DATE ON ALL
THINGS CONSTELLATION!**

FOLLOW US:



@ConstellationStage



@SeeConstellation



@see_constell8n



@SeeConstellation

LEARN MORE:

SeeConstellation.org

SIGN UP FOR OUR EMAIL LIST:





The Power of Partnerships

Innovative Financial Solutions is proud to partner with Constellation Stage & Screen

As independent financial advisors, we partner with our clients to craft customized plans centered on what is important to them. Contact us today to learn how our team of experts can help you pursue your financial goals and help you live the life you want.

To see if our approach fits your needs visit www.ioms.com, call 812-337-1999 or email Ian Essling at ian@ioms.com



Ian Essling



Chris Harmon



Bill Verhagen

Innovative Financial Solutions, Inc.
357 E. Winslow Road
Bloomington, IN 47401
812.337.1999 | fax 812.336.5542

Innovative Financial Solutions PC, Inc.
4 Concorde Lane, Suite 1
Palm Coast, FL 32137
386.597.2856 | fax 386.597.2854

Securities offered through Commonwealth Financial Network®, member FINRA/SIPC, a Registered Investment Adviser.



Dream.

**Believe in yourself.
Work hard.**

Helping people achieve their **dreams** and goals is what we do.

Our team of financial professionals will work hard to help you in managing and growing your finances, purchasing a home, enjoying a fulfilling retirement, and even giving you higher education opportunities through saving or investing.

Contact us today!



German American Bank

Banking | Insurance | Investments
Member FDIC

3 locations in Bloomington to serve you

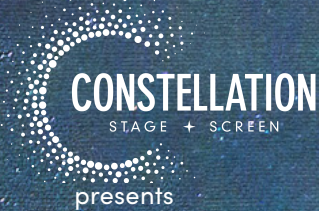
3930 S. Walnut Street • 504 N. College Avenue • 2614 E. 3rd Street
(812)355-2265 • germanamerican.com



FOUNDATION &
GRANT SUPPORT



CITY OF BLOOMINGTON
arts commission



the MOON and the SEA

A NEW MUSICAL
Book by DOUGLAS LYONS
Music & Lyrics by GREIGHTON IRONS
Directed by JOSH RHODES

DIRECTOR

Josh Rhodes[^]

MUSIC DIRECTOR

James Rushin

LIGHTING DESIGNER

Cory Pattak*

LEAD PROPS ARTISAN

Barb Steininger

COVID SAFETY MANAGER

Kate Galvin

STAGE MANAGER

Philip Christiansen

COSTUME DESIGNER

Kate Mott

SOUND DESIGNER

Angela Baughman

SCENIC DESIGNER

Adam Koch*

PROPS MASTER

Aubrey Krueger

ASSISTANT STAGE MANAGER

Chelsea Pell

This is the World Premiere of *The Moon & The Sea*.

Supported in part by the Frank Young Fund for New Musicals, a program of National Alliance for Musical Theatre, with funding from The Hollywood Pantages, a Nederlander Theatre - www.namt.org.

[^] member Stage Directors and Choreographers Society

*member United Scenic Artists 829

SPECIAL THANKS

Production Resource Group



Constellation Stage
& Screen is a proud
member of the National
Alliance for Musical
Theatre and the
National New Plays
Network.




UNITED
SCENIC
ARTISTS

JUNE 8 -25, 2023

THE MOON & THE SEA

CAST

Moon	Alexa Green*
Sea	Demetrio Alomar
Charlie	Rico Lebron*
Erin	Narée Asherian
Doug	Jesse Townes
Elijah	Scott Van Wye

 **ACTORS' EQUITY** ASSOCIATION 1913 * Member of Actors' Equity Association, the Union of Professional Actors and Stage Managers. Actors' Equity Association ("Equity"), founded in 1913, is the U.S. labor union that represents more than 50,000 Actors and Stage Managers. Equity seeks to foster the art of live theatre as an essential component of society and advances the careers of its members by negotiating wages, working conditions and providing a wide range of benefits, including health and pension plans. Actors' Equity is a member of the AFL-CIO and is affiliated with FIA, an international organization of performing arts unions.

ORCHESTRA

Piano	James Rushin
Drums.....	Bryce Green
Acoustic Bass.....	Hillary Fuller
Guitar.....	Nikola Begovic

PRODUCTION STAFF

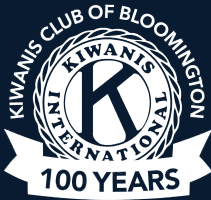
Director.....	Josh Rhodes
Playwright.....	Douglas Lyons
Playwright.....	Creighton Irons
Musical Director.....	James Rushin
Stage Manager.....	Philip Christiansen

FOUNDATION &
GRANT SUPPORT

COMMUNITY
FOUNDATION
BLOOMINGTON • MONROE COUNTY



INDIANA ARTS
COMMISSION



Scenic Designer.....	Adam Koch
Lead Carpenter.....	Michael Fields
Lighting Designer.....	Cory Pattak
Costume Designer.....	Kate Mott
Sound Designer.....	Angela Baughman
Props Master.....	Aubrey Krueger
Props Assistant.....	Barb Steininger
Intimacy Choreographer.....	Jenny McKnight
Covid Safety Manager.....	Kate Galvin
Assistant Stage Manager.....	Chelsea Pell
Audio Mixer.....	Nathan Allen
Run Crew.....	Lauren Hodson
Production Assistants.....	Mars Abbett, Connor Vincek, Johnny Whobrey, Kate Williamson
Electricians.....	Mars Abbett, Allison Gerecke, Nicholas Gwin, Kenny Hertling, Natalie Schact





— EXPERIENCE —

BLOOMINGTON'S

Five-star

WINERY

DESTINATION





TRAVEL+LEISURE

TOP 25 WINERIES TO VISIT IN THE U.S.



Spend the day sipping in our picture-perfect setting. Reserve a wine flight, behind-the-scenes tour, or picnic package. A world-class wine experience in Bloomington—just what you unexpected.



200 EAST WINERY RD | BLOOMINGTON, INDIANA 47404

812-876-5800 | OLIVERWINERY.COM | @OLIVERWINERY




8

•

JUNE 8 -25, 2023

•

THE MOON & THE SEA

MUSICAL NUMBERS

Just Me and You	Charlie
The Meeting	Moon & Sea
Come Back Baby	Erin, Charlie, Moon & Sea
Seas of the Moon.....	Moon & Sea
I Don't Do Love Anymore.....	Charlie
Interlude One	Sea
Avenue A.....	Doug
Interlude Two (Part 1).....	Sea
Silver Waves.....	Moon & Charlie
Interlude Two (Part 2)	Moon & Sea
Beside Me	Doug
First Interlude	Sea
Don't Lie	Erin
Sea Haunt	Sea
I Don't Do Love Anymore (Reprise)	Charlie, Moon & Sea
The Shore	Erin & Charlie

INTERMISSION

Passion of the Sea.....	Erin & Moon
Dirtybird	Doug
In My Bones	Mon & Sea
Interlude Three.....	Moon
The Sea or the Sky.....	Erin
I Remember	Erin, Doug, Charlie, Moon & Sea
Just Me.....	Charlie
Encore: Come Back Baby (Reprise)	Company

Because *The Moon & The Sea* is being developed as a new musical, this song list may have changed since the playbill was sent to print. The order may be different, a song may be cut, or a new one may have been added.”

AN INVESTMENT IN OUR COMMUNITY



Constellation Stage & Screen has a deep and lasting impact on our community and region through our IU Credit Union Education and Outreach Initiative. Our educational offerings nurture a love of the performing arts in students of all ages in South Central Indiana. We offer classes and experiential learning for everyone from the youngest beginner to the adult professional.

Through this work, Constellation builds bridges of thought and dialogue for diverse groups of people around common themes and issues, provides tools for creative self expression, and enhances the quality of life for everyone in our region.

The IUCU Education Initiative contains four pillars:

1. INSTRUCTION

Learning and appreciating the art of theater & film

2. SCHOOL SERVICES

Supporting teachers and in-school student learning

3. PERFORMANCES FOR STUDENTS

Experiencing the joy of live theater

4. STUDENT PRODUCTIONS

Empowering young voices in the creation of theater & film

Learn more about the IUCU Educations Initiative at [SeeConstellation.org/education](https://www.seeconstellation.org/education)

For more information about how you can support education please contact us at (812) 336-7110 or info@SeeConstellation.org



NorthSpring

LEADERSHIP CONSULTING

We partner with successful leaders to grow talent and deliver thriving cultures.



Kim Van Lue
Talent Development
Consultant
Executive Coach

Contact us to learn more about our services in the areas of human capital consulting, leadership development, and executive coaching.

www.northspringleadership.com



learn more about The Mill!

dimensionmill.org



YOU BELONG AT THE MILL!

The Mill is Bloomington's nonprofit center for coworking & entrepreneurship.

What is cowork? Cowork is community!

Bring your laptop, grab some free Hopscotch coffee, & get inspired by the most beautiful "office" and the friendliest coworkers in town.

Our members are techies, remote workers, creatives, entrepreneurs, freelancers, students, professors, small companies, & side hustlers.

Creative sparks fly at The Mill!

CONSTELLATION STAFF



Kate Galvin (she/her)
Artistic Director



Chad Rabinovitz (he/him)
Artistic Director of New Works



Gabe Gloden (he/him)
Managing Director



John Armstrong (he/him)
Development Director



Huner Emin (he/him)
Gallery Manager



Emelie Flower (she/her)
Director of Film



Cassie Hakken (she/her)
Marketing Director



Alaska Harris (they/them)
Head of Electrics



Steve Krahne (he/him)
Master Carpenter

CONSTELLATION STAFF



Jennifer Lloyd (she/her)
Director of Operations



Eric Shelley (he/him)
Education Director



Margaret Shumate (she/her)
Production Manager



Jordan Stephens (he/they)
Audience Services Manager



David Wade (he/him)
Scenic Charge Artist



Daniella Wheelock (she/her)
Associate Artistic Director

SUPPORT STAFF

Feature Film Producer	Zachary Spicer (he/him)
Marketing Associate.....	Seren Fox
Graphic Design Associate	Melanie Roberts (she/her)
Adult Services Associate.....	Tai Penn
Playbill Designer.....	Emily Bedwell (she/her)
Front of House Manager	Laura Hammond (she/her)
Graphic Designer.....	Laura Wade (she/her)

CONSTELLATION BOARD OF DIRECTORS

Officers:

Caroline Dowd-Higgins, *Co-President*
Von Welch, *Co-President*
Evan Martin, *Co-VP*
Rob Shakespeare, *Co-VP*
Tania Gardner, *Treasurer*
David Roberts, *Secretary*

At-large:

Bob Arnove
Ana Maria Brannan
Sally Gaskill
Philippa Guthrie
Ray Hedin
Amy Jackson
Anna Jensen

Angelo Pizzo
Jean Robinson
Stephanie Topolgus
Alyce Zollman

No Dishes

with host Jordan Davis

Check out the No Dishes podcast, where we talk with restauranters, servers, bartenders, and everyone in between! Get to know the people and stories behind Bloomington's newest hot spots and established culinary gems.



23/24 FILM SCREENING SERIES



FRIDAY,
OCTOBER
13
AT 7:30PM
WALDRON
FIREBAY



FRIDAY,
OCTOBER
20
AT 7:30PM
WALDRON
FIREBAY



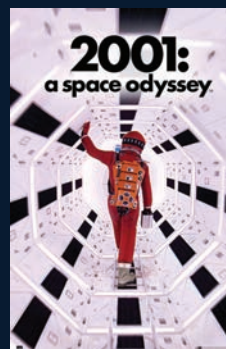
SATURDAY,
OCTOBER
21
AT 7 & 11PM
BUSKIRK-CHUMLEY
THEATER



SATURDAY,
FEBRUARY
17
AT 7 & 10PM
WALDRON
AUDITORIUM



SATURDAY,
FEBRUARY
24
AT 2 & 6PM
WALDRON
FIREBAY



MONDAY,
APRIL
8
AT 7:30PM
WALDRON
FIREBAY



JULY
12 & 13
AT 7:30PM
WALDRON
AUDITORIUM



SATURDAY,
JULY
20
AT 7:30PM
WALDRON
AUDITORIUM



BECOME A SEASON TICKET HOLDER FOR EARLY ACCESS.

DIVERSITY, EQUITY, AND INCLUSION

Constellation Stage & Screen believes all people are deserving of respect, empathy, safety, and inclusion. We expect our staff, board, artists, and patrons to share and demonstrate this commitment.

We are committed to fostering a culture of diversity, equity and inclusion in its artistic productions and management. Additionally, our organization is committed to establishing consistent, meaningful, long-term conversations and relationships with historically marginalized artists and groups in our community. Constellation uses its dedicated D.E.I. Fund to support activities such as:

- Travel and housing for BIPOC guest artists
- Consultants for culturally specific productions
- Intercultural competence training for staff and board members
- Production subsidies for plays/musicals that tell the stories of historically marginalized people
- Play/Musical/Film commissions for BIPOC artists.

If you would like to support the D.E.I Fund, please contact John at john@seeconstellation.org.



Off-Night Productions presents

{ Proof }

2 3 5 7 11 13 17 19 23 29 31

**July 16 - 18 at 7:00 p.m.
at the Waldron Firebay Theater**

Buy Tickets at the Bloom Box Office: www.buskirkchumley.org

Learn more at ontheatre.weebly.com



WHY WORK WITH KRISTI GIBBS?



I have been involved in buying and selling many houses over the years. Never have I had the level of service we received from Kristi Gibbs.

She always responds promptly to questions and really takes the time to get answers and resolve any potential issues. She is incredibly professional, knowledgeable, and seems to genuinely care about her clients. We'll definitely be recommending Kristi to friends and family!

- Seller, Bloomington

CENTURY 21 Scheetz



KRISTI GIBBS • REALTOR®

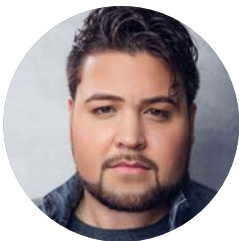
☎ C 812.606.9790
B 812.336.2100

✉ KGIBBS@C21SCHEETZ.COM

🌐 KRISTIGIBBSREALTY.COM

KG  **KEY**
REALTY

ARTISTS' BIOGRAPHIES



Demetrio Alomar

Sea

Demetrio Alomar (he/him) is so excited to be a part of this beautiful new musical. Demetrio has been performing since early childhood, playing roles such as Clyde (*Bonnie & Clyde*), Paul (*A Chorus Line*), Nathan Detroit (*Guys & Dolls*), and Pato Dooley (*The Beauty Queen of Leenane*). He would love to thank Douglas Lyons and Creighton Irons for creating this amazing piece of theatre and entrusting him to be a part of it. He would also like to thank the amazing cast, crew, creative team, and his mother and brother for their endless support!

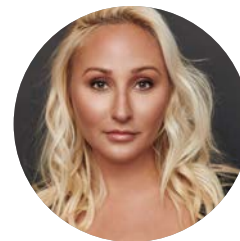
Instagram: @dalomar02
demetrioalomar.com



Narée Asherian

Erin

Narée Asherian (she/her) is originally from fabulous Las Vegas, and is excited to make her Constellation Stage & Screen debut! Favorite credits include *Newsies* (Katherine), *The Fantasticks* (Luisa), *Fiddler on the Roof* (Hodel), *Spelling Bee* (Olive), *Puffs* (Hannah), *Shrek* (Gingy/Sugarplum Fairy), *Scotland Road* (The Woman), and *A Christmas Carol* (Belle/Fred's Wife). Offstage, Narée was Miss Clark County 2022 in the Miss Nevada Organization under the platform of Arts Advocacy, served as main Student Ambassador for Positively Arts, Inc., and UNLV grad/Lee Business Medallion recipient. TikTok/Instagram: @naree_asherian
naree-asherian.com



Alexa Green

Moon

Alexa Green (she/her): Los Angeles/ San Francisco: *Wicked* (Glinda u.s.), Lincoln Center/PBS: *Company* with Neil Patrick Harris and Patti LuPone. NYC: *The Last Five Years* (Cathy Hiatt), *Mandela* (Mary/Erika/Social Worker), *The Sting* (Edith), *Five Points* (Bridget Diamond), *Dust and Shadow* (Polly Nichols), Tours/Regional: *Scrooge The Musical* (Martha Cratchit), *Jesus Christ Superstar* (Mary Magdalene), *Fiddler On The Roof* (Tzeitel), *Shenandoah* (Jenny Anderson). Solo show, *A Shining Hour*, debuted at Feinstein's 54 Below, and debut album, *So Good*, produced by Broadway Records. Recently married her high school sweetheart, Rob. @atAlexaGreen
alexagreen.com

ARTISTS' BIOGRAPHIES



Rico Lebron

Charlie

Rico Lebron (he/him) is making his Constellation Stage & Screen debut. He was born and raised in Atlanta, GA and now resides in New York City. NY stage credits include: *The Tempest* at Shakespeare in the Park, *Angel Reapers* at The Signature Theatre, *Make Believe* at Second Stage Theatre, *God's Fool* at La Mama. He was also a part of the 1st National Tour of *A Christmas Story*. Film: *Social Animals* on Amazon. Many thanks to his whole family and Gillian for their never ending support.

@ricolebron



Jesse Townes

Doug

Jesse Townes (he/him) is based in Los Angeles, CA, but he hails proudly from Indianapolis, IN, where he was raised with good mid-western values and good mid-western cheese dippin' sauce. The latter being something he misses quite dearly. Which is probably why you'll hear him singing "Back Home Again in Indiana" on repeat, a staple he learned from his a cappella days in Straight No Chaser. He currently has two films in the festival circuit, with a third slated to release at the end of this year. And you can see him now on the second season of *Wild West Chronicles* as Benjamin Mudge. If you don't see him there, chances are you'll find him at Mother Bear's during this 2 month stint, dipping breadsticks in the best cheese sauce that's ever existed. Because LA is incredible – but it's too d**n healthy.



Scott Van Wye

Elijah

Scott Van Wye (he/him) makes his return to Bloomington for the opportunity to work on new theatrical works with the talented artists assembled by Constellation. Scott attended IU from 2014–2018 and has since worked in the theatre scene in Indianapolis, his hometown. Recently he's been seen in Douglas Lyon's and Ethan Pakchar's Five Points concert with *Discovering Broadway*. Love to Mom, Dad, Colin and Rebecca.

Old National proudly supports Constellation Stage & Screen.

Strengthening the fabric of our community.

As much as we are a financial institution, Old National is a group of parents, volunteers, artists, athletes, neighbors and friends. By making investments of our time, talent and treasure, we work with you to strengthen the fabric of our community.



Member FDIC | oldnational.com



Serving the area with six locations.
Bloomington | Bedford | Ellettsville



THIS FIRM HAS BEEN RATED
WORLD'S MOST
ETHICAL
COMPANIES
2012 - 2022

*Congratulations,
Constellation Stage & Screen
on your inaugural season!*

CARMIN PARKER P.C.

Committed to Client. Committed to Community.

116 W. 6th St. Suite 200
Bloomington, IN
47404

812.332.6556
www.carminparker.com





Supporting emerging artists.

Bloom
M A G A Z I N E



SIT BACK AND ENJOY THE SHOW WHILE OUR EXPERTS WORK THEIR MAGIC

LOCALiQ experts use top tech and unbeatable insights to optimize your campaigns and drive real results for your business.

Do it all with just one partner!

Contact your sales rep today or visit LOCALiQ.com/GetResults to get started.

Herald-Times | LOCALiQ

BACKED BY DATA. POWERED BY INTELLIGENCE.

CREATIVE TEAM

Josh Rhodes

Director

Josh Rhodes (he/him) is thrilled to be working on this beautiful new work. In New York City Josh directed and choreographed, *Mack & Mabel*, *Grand Hotel*, and *Dear World* at City Center Encores! *The Who's Tommy* and *SPAMalot* the Kennedy Center. Josh's other productions as a director are Ken Ludwig's *Baskerville* and *Guys and Dolls*, at the Old Globe, *Cabaret*, *Hair*, *The Sound of Music*, *Guys and Dolls*, and *Evita* at The Asolo Repertory. At the Muny in St Louis, Josh has directed and choreographed *Jersey Boys*, *Paint Your Wagon*, and the upcoming *Chess*. On Broadway Josh choreographed Rodgers & Hammerstein's *Cinderella*, *It Shoulda Been You*, *First Date*, and *Bright Star*. On London's West End, he choreographed *Carousel* at the English National Opera and *Sweeney Todd* starring Emma Thompson. Josh recently made his film director debut with the musical film, *Beau*. The film has garnered multiple laurels and awards in festivals all over North America. Thanks everyone for supporting new shows.

Angela Baughman

Sound Designer

Angela Baughman (she/her) is a multidisciplinary sound designer who loves to explore the spaces between music and noise. Her work spans over 80 musicals and plays, as well as film, radio, concerts, and studio recording. Selected design credits: *pleytem tsuzamen*, National Yiddish Theatre Folksbiene; *School Girls; or, the African Mean Girls Play*, Pittsburgh Public Theater; *The Birds*, 12 Peers Theater (awarded Pittsburgh's Sound Design of the Decade); *The Clearing* (awarded Best Sci-Fi Feature, 2021 London Independent Film Festival); "*We Are Nature*," a VR experience by the Carnegie Museum of Natural History; and monitor engineering for jazz legends touring through MCG Jazz. BM, Berklee College of Music. thatoundgirl.com

James Rushin

Music Director

James Rushin (he/she) is a musician, improviser, songwriter, composer, multi-instrumentalist, gamer, actor, writer, poet, music producer, and teacher, but most of all, she is so happy to be bring *The Moon & the Sea* to the stage! She was recently seen as one of the onstage Music Directors in both the Broadway run and National Tour of *Freestyle Love Supreme*. Recently, James' music was heard in the interactive play-with-music *Maybe She Dies* at the Kennedy Center. Along with theater work, James has found life on bandstand sharing the stage with the likes of The Deftones and Victor Wooten and more over the years. He is currently focusing on the next iteration of *Maybe She Dies* and crafting some orchestrations for a particular set of superheroes.

Phil Christiansen

Stage Manager

Philip Christiansen (he/him) returns to the Stage Manager's console for his 23rd production with Constellation Stage & Screen. He has been a Stage Manager for the Jacobs School of Music Opera Theater and is the company stage manager for Indianapolis Opera. You may also remember his performances as Cogsworth in *Disney's Beauty and the Beast* and Pulitzer in *Disney's Newsies*. He wishes his son good luck as he heads off to the University of Arizona this Fall.

CREATIVE TEAM

Adam Koch

Scenic Designer

International: *Dreamgirls* (Seoul). Credits across the United States include Off-Broadway, national tours, as well as productions at Signature Theatre, Old Globe, Goodspeed, Ford's Theatre, Paper Mill Playhouse, Baltimore Center Stage, Miami New Drama, Westport Country Playhouse, The Repertory Theatre of St. Louis, Cincinnati Playhouse, Ogunquit Playhouse, Music Theatre Wichita, Maltz Jupiter, Alabama Shakespeare Festival, and Tuacahn Center for the Arts. Awards include: Suzi Bass award for Outstanding Scenic Design for *Titanic* (Serenbe Playhouse), as well as Helen Hayes Award nominations for both *Kiss of the Spiderwoman* (Signature Theatre), and *Bat Boy* (1st Stage). Education: Carnegie Mellon University. See more at adamkochassociates.com and on Instagram @instadamkoch.

Aubrey Krueger

Props Master

Aubrey (she/her) has worked professionally at McLeod Summer Playhouse in Illinois, Interlochen Center for the Arts in Michigan, and Cardinal Stage. She was the prop master for Cardinal's *Hedwig and the Angry Inch*, *The Mountaintop* and *A Year with Frog and Toad!* She is a graduate of Ball State University where she got her BFA in Theatre Design and Technology. Some of her favorite works include *The Full Monty* written by Terrence McNally, Shakespeare's *The Tempest*, *Fun Home* by Lisa Kron and Jeanine Tesori. She thanks her mother, her mentor John Sadler, and her amazing partner for all of their support!

Jenny McKnight

Intimacy Choreographer

Jenny McKnight (she/her) recently completed her sixth year as Professor of Practice in Acting at IU. For IU Theatre, Jenny has directed *Little Women*, *The Tragedy of Julius Caesar*, *Only Child*, *Tiger Beat*, *Waycross: An Audio Play*, *The 39 Steps*, and she also has served as intimacy consultant for more than 40 departmental, UP, and independent student productions. Professionally, Jenny has created intimacy choreography for *Morning after Grace* and *The Book Club Play* at Indiana Repertory Theatre, *Apropos of Nothing* at Bloomington Playwrights Project, *Vino Veritas* at Phoenix Theatre, and *Almost, Maine* at Bloomington HS South. She is a proud union member of AEA and SDC. For more information about Theatrical Intimacy: idcprofessionals.com/ and <https://www.theatricalintimacyed.com>

Kate Mott

Costume Designer

Kate Mott (she/her/hers) is a faculty member at Indiana State University. As a professor in the theater department faculty, she enjoys teaching theatrical design, costume design and costume construction. She earned her BA in Costume Design from the University of Northern Colorado in 2008 and her MFA in Costume Design and Technology from the University of Missouri-Kansas City in 2014. Kate's designs include, *Love's Labour's Lost*, directed by Edward Stern, *Boeing*, *Boeing* at the Summer Repertory Theatre Festival, *Arsenic and Old Lace* at Creede Repertory Theatre, and *The Importance of Being Earnest* at Constellation Stage & Screen. *The Moon and the Sea* is Kate's second design for Constellation. She hopes to continue working with this magnificent company and would like to thank her fellow artists for such a rewarding experience.

CREATIVE TEAM

Cory Pattak

Lighting Designer

NYC: *The Lucky Star, Final Follies, Stalking the Bogeyman, Handle with Care, Skippyjon Jones, Unlocked*. Regional: Resident LD for the Broadway Center Stage series at the Kennedy Center, Weston Playhouse, Old Globe, Portland Stage, Ordway, Goodspeed, KC Rep, Everyman, Philadelphia Theatre Comp, Asolo Rep, Miami New Drama, Olney, Alabama Shakespeare, Ogunquit Playhouse. In the Heights in Puerto Rico, shows for Norwegian Cruise Line and MSC Cruises. National Tour of *Flashdance*. International: *Sunset Blvd, Singin' in the Rain* (Brazil). Upcoming: *The Great Gatsby* (Papermill), *A Wonderful World* (New Orleans/Chicago), *Cabaret* (Old Globe) corypattak.com. IG: @corypattak

Chelsea Pell

Assistant Stage Manager

Chelsea is excited to start her 1st year with Constellation after being with Cardinal for 15 years as an Assistant Stage Manager. She loves being a mom and wife. When she's not hanging out backstage, you can find her in elementary school as a special education aide.

Barb Steininger

Lead Props Artisan

Barb (she/her) began involvement with live theater in the 1980s with Blackfork Players, Shelby Ohio and many years at Richmond Civic Theater, Richmond, Indiana. First doing props for *Odd Couple* and then as Production Manager and Costumes for *Sound of Music* at Blackfork Players. With Richmond Civic Theater, did props for many many productions, most memorable again doing *Odd Couple, Hello Dolly, Fiddler on the Roof, Lion in Winter, Miracle Worker, Brighton Beach*, and costumes for *Ain't Misbehavin*. The last ten years were rewarding as Props Master for Bloomington Playwrights Project for many productions, such as *RX, She Kills Monsters, Spun, Heist, Mark Summers' Everything in its Place, Tuning In and Toast*. With Constellation presently, props for *Elf, Deathtrap* and *American Fast*.

ABOUT THE CREATORS



Douglas Lyons

Book

Douglas Lyons (he/him) is a multi-hyphenate artist. His Broadway acting credits include the *Book of Mormon*, the Original Cast of *Beautiful: The Carole King Musical* and currently the Broadway revival of *Parade*. Douglas has also toured the country in *Rent*, *Dreamgirls* and *Book of Mormon*. As a writer, he earned a GLAAD nomination for his Broadway playwriting debut, *Chicken and Biscuits*, which is currently the 2nd most produced play in America. Douglas served as a writer on both seasons of Apple TV's Emmy award winning series *Fraggle Rock*. As a composer-lyricist, his music and lyrics have been featured on, Nickelodeon Jr., BET Plus, Apple TV, CBS, and more. His musicals include *Polkadots* (Off Broadway Alliance Winner Best Family Show, Atlantic Theater Company), *Beau* (ATF), *Breathe* (Audible) and the world premiere of *Five Points* (Theater Latté Da.) With composing partner Ethan D. Pakchar, Douglas is a 2020 Jonathan Larson Grant finalist. DouglasLyons.net



Creighton Irons

Music & Lyrics

Creighton Irons is a creator, educator, and performer of music and theater. His musicals *Factory Girls*, *Soul Notes*, *Staying Wild*, *Lost Letters*, and *Homefront* have been staged at the American Conservatory Theater in San Francisco, Goodspeed Musicals, UNC-Chapel Hill, NAMT's Festival of New Musicals, Bloomington Playwrights Project, Boston Conservatory, Pace University, and in Tokyo & Osaka, Japan (where Amuse Inc. has mounted two phenomenal productions of *Factory Girls*). His songs have been performed in venues from Kamakura to Dublin and in NYC's favorite cabarets, including 54 Below, Birdland Jazz, The Cutting Room, Lincoln Center, and Joe's Pub. Irons is an alum of the Johnny Mercer Colony, where he met his wife, singer-songwriter Dawn Landes. Their collaborations include two musicals, two children, multiple tours, and one mutt, Scout.



IVY TECH
COMMUNITY COLLEGE

Ivy Tech is your pathway to a better tomorrow.

- 40+ associate degree & certificate programs
- 4-year transfer & career options
- Short-term workforce training

Like and follow us.



ivytechbtown



ivytechbtown



ivytech.edu/bloomington



DO YOU KNOW WHAT'S HAPPENING IN BLOOMINGTON?

School Schedules



Community Events



Local Businesses



Valuable Coupons



Mailed to Bloomington
homes in December!

Sign up to receive our
weekly e-newsletter!



Browse our local online
events calendar



TownPlanner.com



Town Planner®
YOUR COMMUNITY CALENDAR



MartinDirectMarketing.com

Local Bloomington Owners
John & Sharon Martin

Bloomington, Indiana

LIMESTONE POST

WRITERS WITH A VOICE, PHOTOGRAPHERS WITH A VISION

◆ ◆ ◆

Limestone Post Magazine
is a proud sponsor of



is a member of the



**Institute for
Nonprofit News**

LimestonePost.com | @LimestonePost



Cook is a proud supporter
of Constellation Stage & Screen

Build your career with a community centric company

Cook was founded in Bloomington, IN in 1963. Here, we develop and manufacture medical devices that provide less-invasive treatment options for patients around the world.

Learn more about joining Cook's Team by visiting cookmedical.com/careers.

Cook employees build careers in:

- Engineering
- Quality & Regulatory Affairs
- Product Management
- Sales & Marketing
- Information Technology
- Manufacturing



FILM

Constellation's film program brings the art of filmmaking to Bloomington, and beyond! As a film and theater company, we are able to tell stories across different mediums and give writers the opportunity to take their work from page to stage to screen. Film aficionados can dive into classics and obscure cinematic treasures through our screening series partnerships.

Constellation's Film Department uniquely develops and fully produces stage plays into feature-length films, hosts a regular screening series of classics, indie films, and cinematic experiences, and offers year-round filmmaking classes.



FILM SCREENING SERIES

Constellation offers one-of-a-kind cinematic experiences that have you rewatching Hollywood hits in a whole new way: sing along with *The Rocky Horror Picture Show*, throw spoons at the screen while watching *The Room*, or taste your way through *Willy Wonka & the Chocolate Factory*.

Visit seeconstellation.org/film for details on our film series.

FILM CLASSES & PROJECTS

Want to break into the movies yourself? Local filmmakers can sharpen their skills through classes and studio projects using top of the line equipment. We also offer introductory classes for moviemaking on your phone, making film truly accessible to everyone.

Enrollment for spring classes is now open at seeconstellation.org/education.

PROJECT CONSTELLATION

Project Constellation (formerly Project Pigasus) is a state-wide high school screenwriting competition sponsored by Indiana based film company Pigasus Pictures. Indiana students grades 9-12 submit short screenplays, a winner is chosen, and Pigasus brings a professional film crew to the winner's town to fully produce their movie!

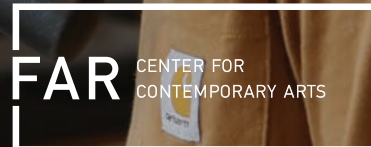
Visit seeconstellation.org/education to learn more about this season's competition.

PICTURA KIDS WORKSHOPS

We believe that art is an important tool for a child's development, physically, emotionally and culturally. Our children's programming aims to provide opportunities for kids to engage with fine art and to respond to it through their favorite creative tools and techniques.

Learn more about our kids programming at thefar.org or by scanning the QR code below. You can also visit Pictura Gallery for free Tuesdays through Saturdays 11am-5pm.

THEFAR.ORG | 812.336.0006 | info@thefar.org
202 S Rogers St Bloomington, IN





Treat yourself with a

**HOT STONE OR
CBD MASSAGE**

812.333.4917



You deserve to feel your best.

Visit us online or in-person at the Fountain Square Mall
WWW.BLOOMINGTONBODYWORKS.COM



**PROUD
SUPPORTER OF
DRAMATIC
ARTS**




**CARDINAL
SPIRITS**

DISTILLERY + COCKTAILS + KITCHEN
922 S MORTON ST CARDINALSPIRITS.COM

The key to a new home is just a click away.

Check out our great rates and low down payment options!

www.iucu.org



We started a credit union
and created a community.



Federally insured by NCUA

IU Credit Union

812-855-7823 • iucu.org



Feast MARKET
FARM TO TABLE
Lunch & Dinner Daily
Saturday & Sunday
Brunch 9am



HANKS
PIZZA | MAC | TOT BOWLS
Lunch & Dinner Daily
Order Online



Che Bello
AUTHENTIC ITALIAN
A Fresh Twist to Italian
American Classics



BBS MARKET
HOMESTYLE BREAKFAST
AND LUNCH
Butcher Shop, Bakery,
Country Market



The Owl
BLOOMINGTON'S ONLY ALL
VEGAN AND VEGETARIAN
RESTAURANT
Sunday Brunch 10am



METAL WORKS
SMALL BATCH CRAFT BEERS
Eclectic Pub Fare



Southern Comfort
SOUTHERN COMFORT FOOD
Lunch & Dinner Daily
Saturday & Sunday
Brunch 9am



Garrison
FULL-SERVICE CATERING
Corporate Events, Weddings,
Box Lunches, & More



HELPING CHILDREN WITH AUTISM FIND THE KEY TO A BRIGHTER FUTURE

We create fun, compassionate, individualized
ABA programs to help your child reach
their maximum potential.

JOIN US
IN MAKING
A DIFFERENCE!

We're a family-oriented
company committed to
helping you grow
A MEANINGFUL CAREER!

www.UnlockingTheSpectrum.com

• 855-INFO-UTS

Discover the Difference Art Can Make

All of us at The Matthews Snyder Group are proud to support the artistry of Constellation Stage & Screen.

BAIRD

Private Wealth
Management



The Matthews Snyder Group

202 S. College Avenue
Bloomington, IN 47404
812-332-6333 | 800-790-6333
matthewssnyder.rwbaird.com

Discover the *Baird Difference*

Ryan Reed, Dan Matthews, Colleen Curry, Loren Snyder,
Alyce Zollman, Lyman Snyder, and Vadim Morozov



©2022 Robert W. Baird & Co. Incorporated. Member SIPC. MC-923454.

STREAM THE VERY BEST



DOWNLOAD THE
FREE PBS APP



BE A STAR IN OUR GROWING CONSTELLATION

BECOME A CONSTELLATION PRODUCER TODAY

Revenue from tickets accounts for less than 40% of our total operating costs. Producers allow Constellation to deliver the highest quality experiences at prices that are affordable and accessible to our community. Our Producers have allowed us to offer our popular Pay What You Will Thursdays and Community Access Ticket programs, eliminating any financial barriers to our programming.

Producers make a total annual household contribution of at least \$1,000 a year, and receive special benefits all throughout the season, including special private receptions featuring open bar and complimentary food, and special “Page-to-Stage Experiences” that provide exclusive early access and insight into the creative process of each show.



For more information visit seeconstellation.org/support or contact Development Director, John Armstrong, at john@seeconstellation.org.

AN INVESTMENT IN OUR FUTURE



The Producer Society is a group of passionate individuals committed to the continued success of Constellation Stage & Screen. With their ongoing support, Constellation Producers enjoy a variety of benefits, including access to our private opening night receptions during our Mainstage season. For more information on the Producer Society, contact John Armstrong at john@seeconstellation.org.

Executive Producer (\$10,000+)

Robert Arrove
Jocelyn Bowie & David Semmel
Cathleen Cameron
Carl & Marcy Cook
Sally Gaskill*
Jessika & Bryan Hane
Connie & Harv Hegarty
David & Susan Jones
Evan & Angela Martin
John E. Thiel
Kathleen Knight Weller
Pete & Janell Yonkman

Co-Producer (\$5,000+)

M'Lissa & Michael Baye
Anne & Jim Bright
Karen & Bill Hicks
Jane & Pat Martin
Cynthia & Dale Nelson
Ed & Jan Ryan
Betsy & Chris Smith
Ruth Aydt & Von Welch

Associate Producer (\$1,000+)

Ruth Albright
Rodger & Diana Alexander
Ewa Paluszkiewicz & Michael Ausbrook
Brenda & Daniel Hughes
Elizabeth Rosdeitcher & Alain Barker
Mary Clare & Mark Bauman
Angelo Pizzo & Bobbi Bowden
Ana Maria Brannan & Daniel Hickey
Steve & Beverly Brown
Bill & Jo Ellen Buffie
Lance & Kristen Bunch
Laurie Burns McRobbie & Michael McRobbie
Diane Buzzell & Michelle Miller
Beth & Fred Cate
Carole & John Clark

Ginny Coombs
Mary Alice Cox & Jim Koch
Richard Crowe & Rebecca Marks
Malcolm Dalglish & Judith Klein
Carrie & J. Blue Davis
Bob & Libby DeVoe
Caroline Dowd-Higgins & C. David Higgins
Erika Dowell & James Morrison
Cheryl Engber
Karen Howe Fernandez & John Fernandez
Nancy Hutchens & Michael Fields
Sara Skrabalak & Mark Fraley
Sandra & Donald Freund
Penny Gaither & Stephen Pritchard
Tania & Jim Gardner
Kristi Gibbs
Philippa Guthrie & Alex Tanford
Jo Ellen & Steve Ham
Jacey Hammel & David Eakin
Michelle & John Hauser
Jennie & Dennis Hendrix Foundation
Jenny & Don Herdrich
Anna & Espen Jensen
Vladan & Traci Jovanovic
Joyce Krothe
Henry & Meredith Leck
Jennifer Lloyd
Jim Mahady & Jeff Richardson
Bloomington Baird Branch c/o Jeff Main
Andy & Jane Mallor
Daniel Matthews
Celeste & Michael McGregor
David Meyer & Cynthia Neidhart
Miah & Jonathan Michaelsen
The Mikac Family
John & Lori Miller
Martha & David Moore
Daniel Grundmann & Julie Paris
Erin Parks
Jane & Rob Parry

Katie & Travis Paulin
Drs. Ajay & Padma
Ryan & Tyler Prall
Angie & Tony Raymond
Ron & Carol Remak
Mary Alice & Jim Rickert
Fred & Pegi Risinger
Jean Robinson & Jack Bielasiak
Sarah & Randy Rogers
Sherman & Meredith Rogers
Hal & Sandy Sabbagh
Glorianne Leck & Susan Savastuk
Kathy Schick & Nicholas Toth
Lynn Schwartzberg
Don & Melinda Seader
Carol Seaman
Rob & Marie Shakespeare
Sue & Winston Shindell
Brian & Angela Shockney
Jefferson & Mary Shreve
Curtis & Judith Simic
Vi Simpson
Esther Smail
Loren A. Snyder
Karen Spaw
Jessica Sporn
Janet & Jeff Stake
Marge Steiner
Bruce & Shannon Storm
Timothy & Martha Sullivan
Paula Sunderman & Stephen Gable
Allison & Jim Ward
Lee Formwalt & Richard Weichert
Peggy & David Welch
Jeff & Legene White
Mark Wiedenmayer
Charlotte Zietlow
Alyce Zollman

ADDITIONAL CONSTELLATION SUPPORT

MAY 1, 2022 - MAY 10, 2023

Thank you for your generous support of Constellation Stage & Screen. If your name has been omitted or incorrectly listed, please accept our apologies. For corrections please contact us at 812.336.7110 or info@seeconstellation.org.

\$1,000+

Andrew Davis
Bloomington Baird Branch c/o Jeff Main
Daniel Matthews
Loren A. Snyder

\$500 - 999

Anonymous
Kathy & Charles Aiken
Doug & Hilary Anderson
Patricia & Sam Ardery
April Armstrong & Susan Coté
Anne Higley
Prince & Sheila Butler
Ann Marie Thomson & Jim Calli
Jeanette Clausen
Craig Coley & Heather Blair
Anne Epperson
Nikki & Noah Farrell
Dana & Greg Gloden
The Stone & Green Stone Fund
Debby Herbenick & Rick Dietz
Jeffrey & Margaret Jones
Nancy Kalina & Kim Davis
Mary & John Kennedy
George & Catherine Korinek
Doris Wittenburg & Harlan Lewis
Howard Mehlinger
Richard & Joanna Millunchick
Mary Jane & Arlen Packard
Beth & Dan Piekarsky
Mary Carol & Dennis Reardon
Idie Kesner & Paul Robins
Beth & David Rupp
Becky Stapf
Patricia Theil
Dixie Welch & Peter Schwandt
Lisa & Steve Wickes
Michael Willett
Dave & Keeley Wise

\$100 - 499

Anonymous
Malcolm & Jennifer Abrams
Patricia Anderson
Paul & Margie Anderson
Robert J Armstrong III
Kathy Avers & Dan DeBard
Yvonne Avery
John Bailey
Timothy & JoEllen Baldwin
Alan Balkema & Monica Dignam
Amy & Pete Batule
Emily Bedwell
Judith & Ted Benckart
Charles Benson
Wendy & Ed Bernstein
Bob Berry
Ann Blair
Jim Blickensdorf
Elizabeth Boling
Cynthia & Bennet Brabson
Marsha R Bradford
Ruth Kenny & David Brenneman
Barb & Neal Bridgett
Jan Bulla-Baker & Jack Baker
Patty & Danny Callison
Carney Family
Jennifer Cassidy
Kelly Cauffman
Allure Eyecare
Sandra Churchill
Martin Claeys & Kelly Davis
Debbi & Dan Conkle
M. A. & Norm Crampton
Teresa Creek & John Brumleve
John & Sue Cronkhite
Jimmie & Rhonda Crowe
Don Cummings
Colleen & Tyler Curry
Jef & Pamela Davidson
Samuel Davis
Lisa & Jack Deinlein
John DePaemelaere & Susan Montgomery

Gladys & Gene DeVane
Janie Dillard
Sterling & Melinda Doster
Leah Dunn
Marilyn & David Ebbinghouse
Kate-Lyn & Karen Edwards
Mallory Elver
Adam D. Estes & Kari Pfau Estes
Don & Peg Faimon
David & Tyler Ferguson
Harriet & Bill Fierman
First Response Services
Bob Flynn & Yvonne Wittmann
J Thomas Forbes
Anne Fraker & Richard Rose
Sarah Franklin
Karen & Steven Franks
Margaret Frisbie
Carlos & Vince Gaitani
Jeannie & Greg Galbreath
Thomas Gallagher
Lori & Preston Garraghty
Jiayi Geng
Connie Cook Glen & Jim Glen
Angela & Gerhard Glomm
Larry Goodman
Emily Goodson
Paula Gordon
Laurie Grant
Rae Greiner
Michael Grossberg
Christine Haack & Mark Hood
Andy & Cara Hakken
Jean Haley
Crystal & Jim Hammon
Laura Hammond
Peter Haralovich
Mark Harris
Alice-Anne Harwood
Janet Hayes
Ivona & Ray Hedin
Kate & Carter Henrich
Kenny Hertling

SUPPORTING CONSTELLATION

At Constellation, we believe that the arts are vital to the quality of life for every individual and are essential to the overall health of our community. Storytelling fosters empathy and promotes a better understanding of our shared humanity, live entertainment stimulates the local economy, and excellent art elevates a community to local, regional, and national prominence, allowing us to retain and attract talent.

Earned revenue sources, such as ticket sales, account for approximately 40% of our annual operating budget. As such, the cultural, economic, and social impact that Constellation generates would not be possible without the support of our individual donors, grantors, and sponsors.

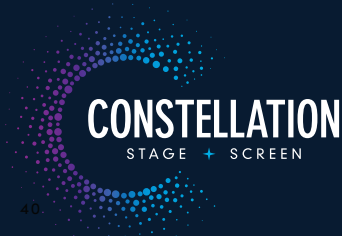
If you share these beliefs and values, please consider supporting Constellation Stage & Screen with a tax-deductible contribution!

To learn more about ways to give, please visit seeconstellations.org/support or contact us at 812.336.7110 or info@seeconstellations.org.

From the bottom of our hearts, we thank you for sharing our vision and passion.

Ruth Hickman
John D. Hobson
Michael Hoff
Bill & LuAnne Holladay
Joe Hren
Cindy & Dave Israel
Amy & Jason Jackson
Ajay Jackson
Robert & Stephanie Jackson
Janet James
Gate Jantara
Elma & Tim Jessen
Sonja Johnson & Keith Solberg
Beckie & Chuck Jones
Robert Jones
Anne Jones
Hilary Kahn
Karla & John Kamstra
Laura & Cheng Kao
Danny & Hilary Key
Hal Kibbey
Iris F. Kiesling
Jillian Kinzie & Joseph Throckmorton
Alicia Kozma & Max Thompson
Thomas & Colleen Kuhn
Sara Laughlin
Mollie Lemon
Derek & Beth Leney
Anne Leonard
Diana Lambdin & Frank Lester
Lynda & Barry Levin
Greta Lind
Connie Lindman
Michael Litwin & Mary Blizzard
Stephanie Lochbihler & Zach Rody
Beth & Dan Lodge-Rigal
The Loring Family
Rebecca & Tim Manring
Heather Maritano
John & Julie Martin
Matheu Architects
Nancy Mathews & Ingrid Montecino
James & Judy Mathias
Sue & Tim Mayer
Ruth & David Mayhew
Melinda Swenson & Carol McCord
Jane McLeod & Steve Krahne
Patricia McManus & John Breen
Robert Meitus & Carrie Newcomer
Nancy & Clarence Miller
Vadim Morozov
Linda Mothershed & John Teising
Valeri Houghton & Frank Motley
Patrick Murphy

Glenda Murray
Sarah Nagy
Patricia Nash
National Society of Arts & Letters
Louise O'Boyle
Shannon O'Connor Starks & Eric Starks
Denise & Harold Orgen
Erika Oliphant
David & Sharon Ormstedt
Patricia & Eric Orth
Amy Osajima
Matt & Molly Osgood
Massimo Ossi
Maya Owens
Angela Parker & Bret Raper
Blake & Chelsea Pell
Dan & Tina Peterson
Sara Peterson
Harriet Pfister
Linda & Charles Pickle
Craig & Diane Pikaard
Tom & Robert Ping-Slater
David Blumberg & Stephen Pock
Jonathan Podolak
Kathy & Randy Powell
Carlene Quinn
Otto Ray
Ryan Reed
Lislott & John Richardson
Bethan Roberts & Mark Pietrykowski
David Rodgers
Lynn Rogers
Root Advisors
Megan & Gavin Rothrock
Kathleen Rowold & Frank Miller
Thomas & Elliott Rude
Nancy & Jerry Ruff
Mary Runnells
Sagar Samtani
Susan Sandberg
Sarah Bush Lincoln Health Center
Mike Satterfield & Dorothy Granger
Kelly Carson & Virgil Sauder
Marty & Fred Schick
Andrea White & Brad Schiesser
Lynn & Susan Schoch
Jennifer Schopf
Kristin & John Schroeder
Phyllis Schwitzer
Debora & Ralf Shaw
Caroline & Joe Shaw
Kathy & Mark Sheehan
Alex Shortle
Brandon Shurr



Nico Sigler & Kaisa Goodman
 Susan & McKenna Simmons
 Linda & Charlie Sinex
 Judy & Jim Singleton
 Wendy Solganik
 Janet Stavropoulos & Michael Molenda
 Marc & Pamela Stephens
 Marion Krefeldt & Craig Stewart
 Allison Stites & Richard Ham
 Niki & Strats Stratigos
 George Stratigos
 Jeff Stumpf
 Susan Swaney & Ian Wollen
 Juliana Tagliaferri
 Gary & Janet Taylor
 Beverly Teach
 Gilbert Thomas
 Stephanie Topoligus
 Jim Topoligus
 Chris & Nancy Tresslar
 Tim & Young Ae Tresslar
 Mike & Betsy Trotzke
 Kathleen Turner
 Rachel & Alberto Varon
 Jennie & Neville Vaughan
 Anne Veldman

Marcia Veldman & Bryan Berkley
 Armin Vit & Bryony Gomez-Palacio
 Tammy Wagner
 Paul Wagoner
 Maria & Ron Walker
 Jason Walls
 Diane Ward
 Karen B Watts
 Nancy Weber
 Jeff Weiser
 Marcy & Michael Wenzler
 Chris Wheeler
 Brad Wheeler
 Jack & Julia Wickes
 Deb Allmayer & James Williams
 Kristin & Frank Wintin
 Donna & Richard Wolf
 Erin Wyatt
 Constance Young
 Michael Zeller
 Rebecca Zietlow



OF GREATER BLOOMINGTON

Connecting artists with each other and the community.

FACILITATING COLLABORATION

EMPOWERING INDIVIDUAL ARTISTS

ENRICHING THE COMMUNITY'S ARTS NETWORK

FIND OUT MORE/BECOME A MEMBER:

BloomingtonArts.org



Ψ INDIANA UNIVERSITY
SUMMER THEATRE

**INTO
THE
WOODS**

Music and Lyrics by Stephen Sondheim
Book by James Lapine

Originally Directed on Broadway by James Lapine

Orchestrations by Jonathan Tunick

Directed and Choreographed by DJ Gray
Music Direction by Jeremy Gussin

JULY 7–29
WELLS-METZ THEATRE

Join IU Summer Theatre at the
LEE NORVELLE THEATRE AND DRAMA CENTER
on the corner of
7th & EAGLESON

To order tickets, visit theatre.indiana.edu.

Orders can also be placed in person at the IU Auditorium Box Office,
open Monday–Friday, 10 a.m.–5 p.m., or by phone at (812)-855-1103.



Spacious villa-style
hotel suites with fully
equipped kitchenettes

Queen-size sofa sleeper
in each living room

Large jetted tubs
and fireplaces available

Perfect for romantic
getaways as well as
business meetings
and retreats

Ample, free parking

Minutes from Indiana
University campus

**CENTURY
SUITES
HOTEL**

ONE MILE EAST OF TARGET
WWW.CENTURYSUITES.COM
812.336.7777



One World at

Woolery MILL


VENUE | CATERING | BAR

*curating hospitable experiences through culinary arts
and impeccable service since 2008*

W | WWW.ONEWORLDATWOOLERY.COM

E | CATERING@BLOOMINGTON.COM

P | 812.334.3663

A woman with dark hair in a bun, wearing a dark blue leotard and a voluminous, flowing purple skirt, is captured in a dynamic dance pose. She is barefoot, with one leg extended forward and the other back, arms reaching out. The background is a soft, light blue gradient.

We believe the Arts strengthens communities,
draws people together, and brings us joy.

FAMILY LAW | BUSINESS LAW | ESTATE PLANNING

MALLOR | GRODNER
Attorneys

BLOOMINGTON 812.332.5000

WWW.LAWMG.COM

INDIANAPOLIS 317.453.2000



COME SEE OUR CAST AFTER THE SHOW!

Our star lineup of freshly poured beers are the perfect nightcap to a wonderful theater evening. We'll see you in our Downtown Bloomington taproom after the performance!

SWITCHYARD
BREWING COMPANY®

419 N Walnut Street
switchyardbrewing.com



When *Dreams Become Reality*

a showcase of shorts, one acts and new works
Presented by Monroe County Civic Theater



Are you a playwright?
Want to produce a piece you love?
MCCT is currently accepting
submissions for a Showcase of
One Acts this October.

Get more info and submit at
mcct.org/oneactfestival



CommunityCars.com

Shop 10 Brands in One Place



Shop 100% online by using our Express Store at
CommunityCars.com

THE ELM

Drop in. Branch out.



614 E 2nd Street Bloomington, IN 47404 | 812-407-4339 | [@elmbloomington](#)

Dinner Wednesdays - Saturdays 5pm to 10pm



— EXPERIENCE —
BLOOMINGTON'S
Five-star
WINERY
DESTINATION



TRAVEL+
LEISURE
TOP 25 WINERIES
TO VISIT IN THE U.S.



Spend the day sipping in our picture-perfect setting.
Reserve a wine flight, behind-the-scenes tour, or
picnic package. A world-class wine experience in
Bloomington—just what you unexpected.

OLIVER
WINERY

200 EAST WINERY RD | BLOOMINGTON, INDIANA 47404
812-876-5800 | OLIVERWINERY.COM | @OLIVERWINERY



WFHB'S
YOUTH RADIO

Be heard!
Be involved!
Be on the radio!

Storytelling, journalism, engineering, DJing,
podcasting, & more!
Saturdays at 6 PM
Ages 13-20

For more info email youthradio@wfhb.org



B97

Today's Best Music!

Auto Reset Hold Start

  @BloomingtonB97

Listen at 96.7FM; online at wbwb.com;
or download the TuneIn App

MAKE IT memorable

WE DON'T JUST WORK TO SHAPE BRANDS, WE SHAPE MEMORIES. OUR CREATIVE EDGE SPEAKS THROUGH CINEMATOGRAPHY, PHOTOGRAPHY, ANIMATION, BRAND STORY AND MORE TO HELP CLIENTS DELIVER MEANINGFUL STORIES TO THEIR AUDIENCES THAT DRIVES AFFINITY.

connection

dreams

authentic

imaginative

experience

moments

story

free



THISISBLUELINE.COM

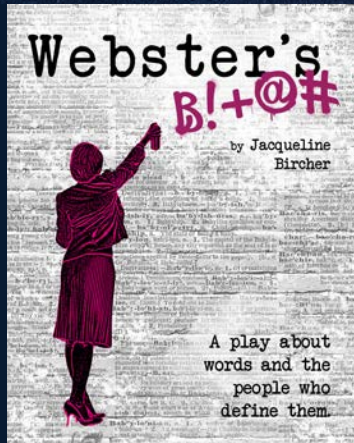
812.822.0827

2023-2024 THEATRICAL SEASON

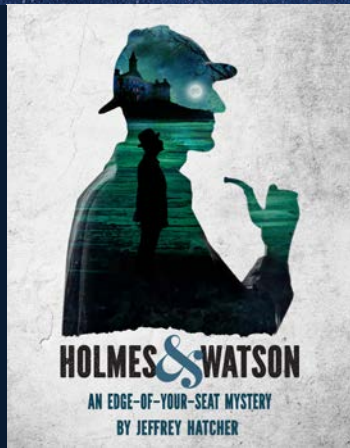
CONSTELLATION

STAGE + SCREEN

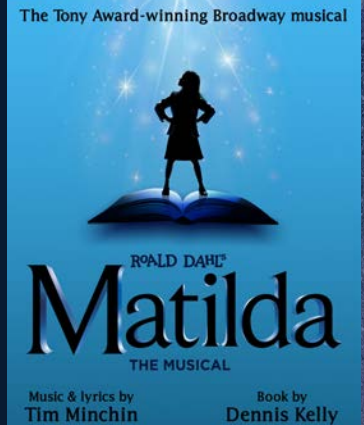
JAN 25 - FEB 11



SEPTEMBER 7 - 24



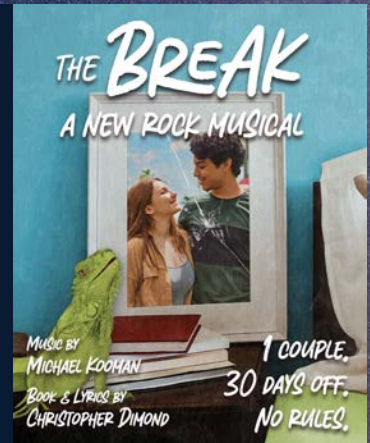
DECEMBER 14 - 31



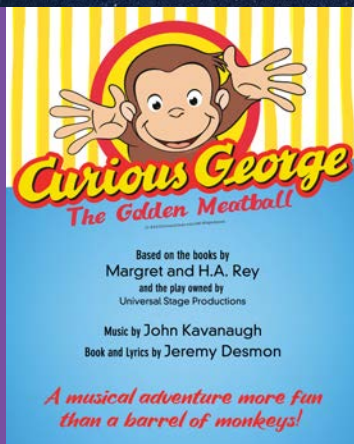
MAR 21 - APR 7



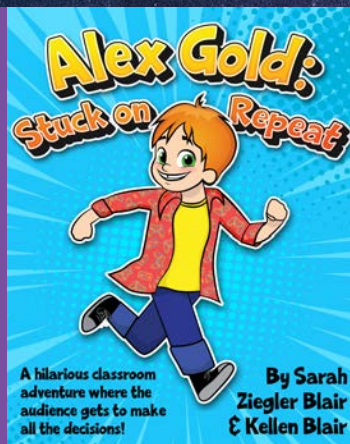
JUNE 6 - 23



OCT 20 - NOV 5



APR 26 - MAY 12



Become a Season Ticket Holder today!

Save BIG, get early access, avoid all fees, and more.

SeeConstellation.org
812.336.9300